

How to perform a quantitative G6PD test

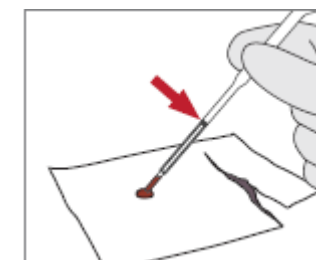
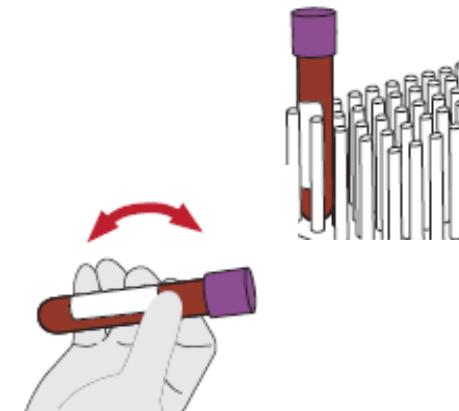
Theory: Part 1

(venous blood slides)

Step 5: Prepare blood specimen (venous blood)

Test procedure steps

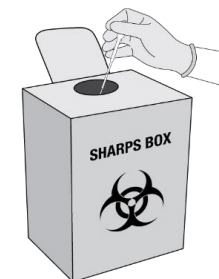
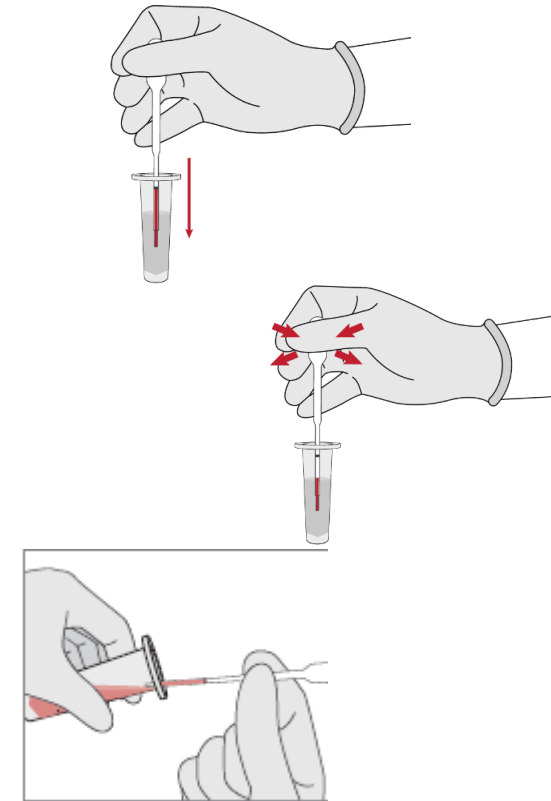
- If venous blood is refrigerated, ensure that you take it out of the fridge to bring whole blood to room temperature before testing
- Rock the vial gently to mix. Ensure the blood vial is mixed before testing
- Put 25 ul of venous blood onto the test device wrapper using a pipette.
- Use sample collector (EZI Tube+). Tilt horizontally to draw blood to the black line.
- Note: Capillary action will not work well if the pipette is vertical to the drop / solution.



Step 6: Mix the blood specimen with the extraction buffer

Test procedure steps

- Place the sample collector into the extraction buffer.
- Press and release the **bulb of the sample collector** to mix the collected specimen with extraction buffer.
- Press and release the sample collector 8 to 10 times to mix blood with buffer.
- Collect mixed sample with new sample collector.
- Discard used sample collectors in the biohazard waste or sharps box.



Step 7: Place the mixed specimen on the test device

Test procedure steps

- Press the bulb of the sample collector fully (cover the small hole on the bulb). Apply the mixed specimen to the specimen application hole of the test device.
- Close the measurement chamber flap immediately after applying.
- Discard used sample collector in the biohazard waste or sharps box.
- Wait for 2 minutes for the test result automatically to appear on the screen.

